

Top 10 Largest Counties in Michigan (2009)

Ranked by Percent Change in Population (2008-2009)

County	Census Population			Population Change 2000 - 2009	Percent Change 2000 - 2009	Population Change 2008 - 2009	Percent Change 2008 - 2009
	Actual	Estimates					
	2000	2008 ¹	2009				
Kalamazoo County	238,603	246,157	248,407	9,804	4.1%	2,250	0.9%
Washtenaw County	322,770	344,767	347,563	24,793	7.7%	2,796	0.8%
Kent County	574,336	604,723	608,315	33,979	5.9%	3,592	0.6%
Ottawa County	238,314	260,891	261,957	23,643	9.9%	1,066	0.4%
Oakland County	1,194,156	1,202,352	1,205,508	11,352	1.0%	3,156	0.3%
Macomb County	788,149	830,037	831,427	43,278	5.5%	1,390	0.2%
Ingham County	279,412	277,971	277,633	-1,779	-0.6%	-338	-0.1%
Saginaw County	210,040	200,858	200,050	-9,990	-4.8%	-808	-0.4%
Genesee County	436,148	428,859	424,043	-12,105	-2.8%	-4,816	-1.1%
Wayne County	2,061,161	1,949,024	1,925,848	-135,313	-6.6%	-23,176	-1.2%
Michigan	9,938,444	10,002,486	9,969,727	31,283	0.3%	-32,759	-0.3%

Top 10 Fastest Growing Counties in Michigan (2008-2009)

Ranked by Percent Change in Population (2008-2009)

County	Census Population			Population Change 2000 - 2009	Percent Change 2000 - 2009	Population Change 2008 - 2009	Percent Change 2008 - 2009
	Actual	Estimates					
	2000	2008 ¹	2009				
Keweenaw County	2,301	2,273	2,305	4	0.2%	32	1.4%
Kalamazoo County	238,603	246,157	248,407	9,804	4.1%	2,250	0.9%
Washtenaw County	322,770	344,767	347,563	24,793	7.7%	2,796	0.8%
Isabella County	63,351	66,725	67,176	3,825	6.0%	451	0.7%
Kent County	574,336	604,723	608,315	33,979	5.9%	3,592	0.6%
Grand Traverse County	77,655	85,939	86,333	8,678	11.2%	394	0.5%
Baraga County	8,746	8,566	8,604	-142	-1.6%	38	0.4%
Ottawa County	238,314	260,891	261,957	23,643	9.9%	1,066	0.4%
Marquette County	64,629	65,462	65,703	1,074	1.7%	241	0.4%
VanBuren County	76,263	77,978	78,227	1,964	2.6%	249	0.3%
Michigan	9,938,444	10,002,486	9,969,727	31,283	0.3%	-32,759	-0.3%

¹ According to the U.S. Census Bureau, the county population estimates that are released annually in March are not finalized until the subsequent year's estimates are released. This occurs because the March estimates are based on six months of data (January - June) and are then revised based on a full year of data. As a result, the estimates provided in March can be revised in subsequent years because of updated birth/death data, new prison population or international migration data, U.S. Census Bureau methodology changes, and/or accepted challenges from counties regarding their initial population estimate.

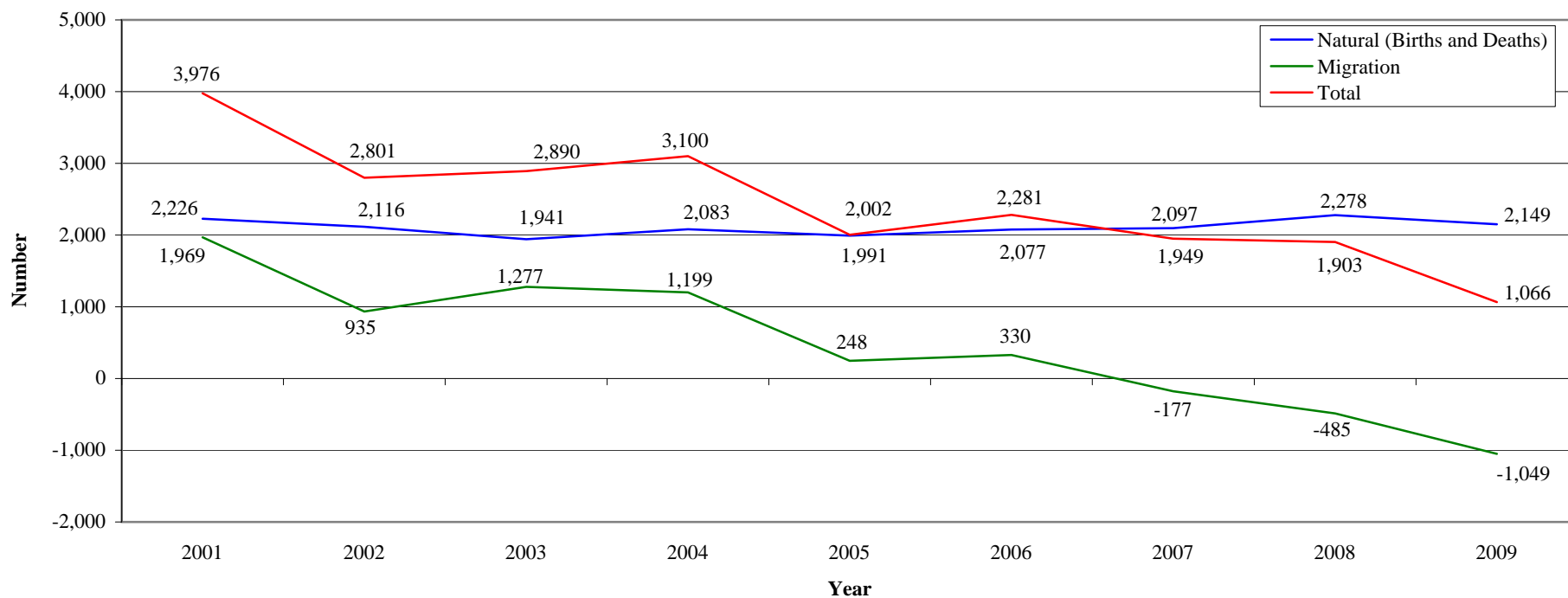
Ottawa County, Michigan

Components of Population Change (2000-2009)

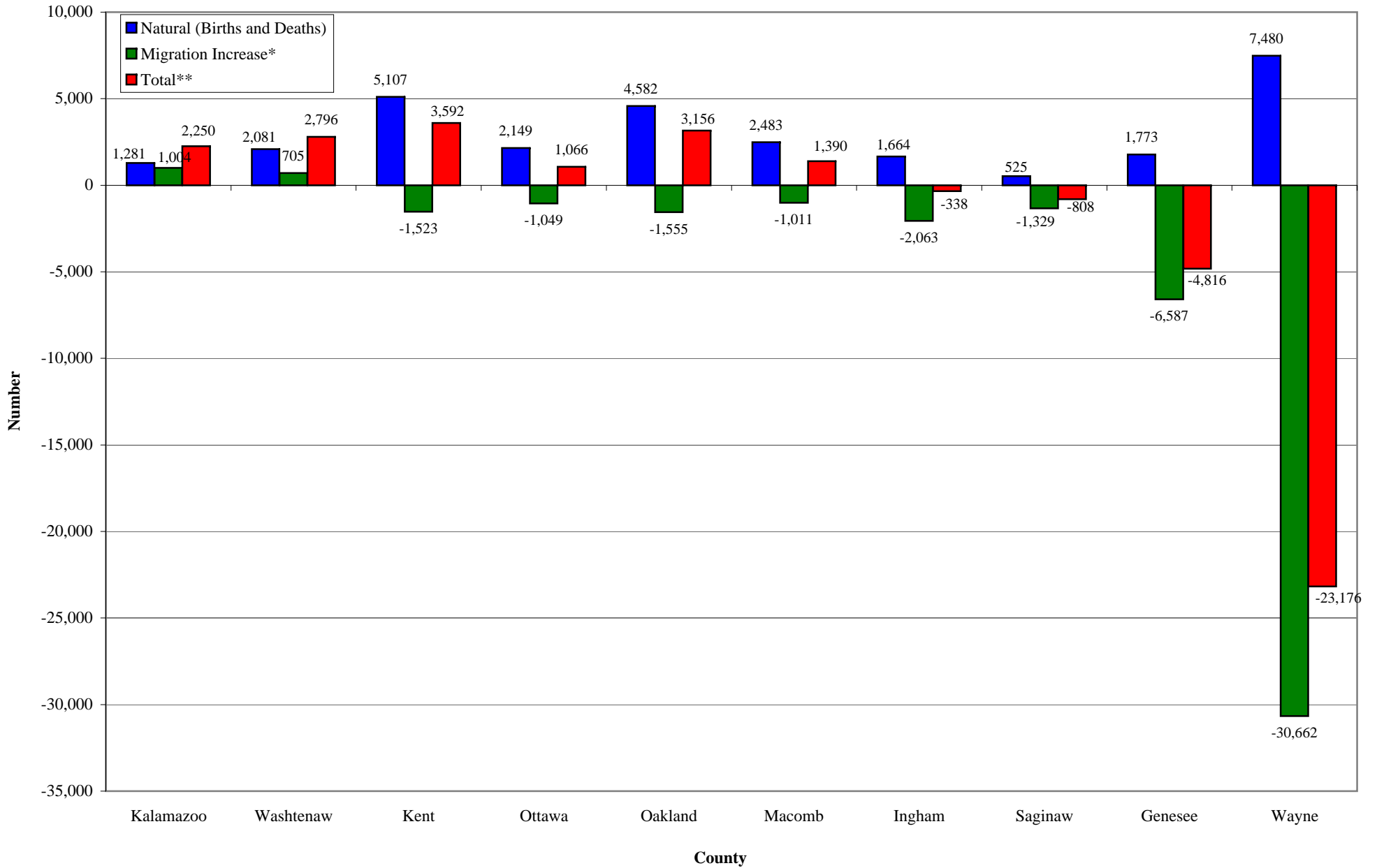
	2000 ¹	2001	2002	2003	2004	2005	2006	2007	2008	2009	Total (2000-2009)
Births	942	3,659	3,615	3,431	3,613	3,503	3,593	3,608	3,801	3,744	33,509
Deaths	330	1,433	1,499	1,490	1,530	1,512	1,516	1,511	1,523	1,595	13,939
Natural Increase	612	2,226	2,116	1,941	2,083	1,991	2,077	2,097	2,278	2,149	19,570
International Migration	96	373	349	301	280	294	297	266	266	273	2,795
Domestic Migration	426	1,596	586	976	919	-46	33	-443	-751	-1,322	1,974
Migration Increase	522	1,969	935	1,277	1,199	248	330	-177	-485	-1,049	4,769
Residual²	14	-219	-250	-328	-182	-237	-126	29	110	-34	-1,223
Total Increase	1,148	3,976	2,801	2,890	3,100	2,002	2,281	1,949	1,903	1,066	23,116

1. The calculation for 2000 reflects the estimated change in population for the three-month period between April 1, 2000 and July 1, 2000 of the decennial census year.

2. All data were obtained from the U.S. Census Bureau. The residual calculation is based on a complex formula conducted by the Census Bureau.



Top 10 Largest Counties in Michigan Components of Population Change (2008-2009)



* The migration increase includes international and domestic migration.

** The total includes the natural (births and deaths) and migration components of population change, as well as a residual that is based on a complex formula conducted by the U.S. Census Bureau.