

LEGEND

- P** PARKING AREA (ROADSIDE)
- i** INFORMATION KIOSK
- - - UNMARKED TRAIL
- ~ 2' TOPOGRAPHIC CONTOUR

PARK USER INFORMATION

No alcohol is permitted
No motor vehicles beyond parking lot
Bicycles are NOT allowed on trails
Dogs are allowed off leash
No camping or fires
All Ottawa County Open Space rules
& regulations are in effect on park property

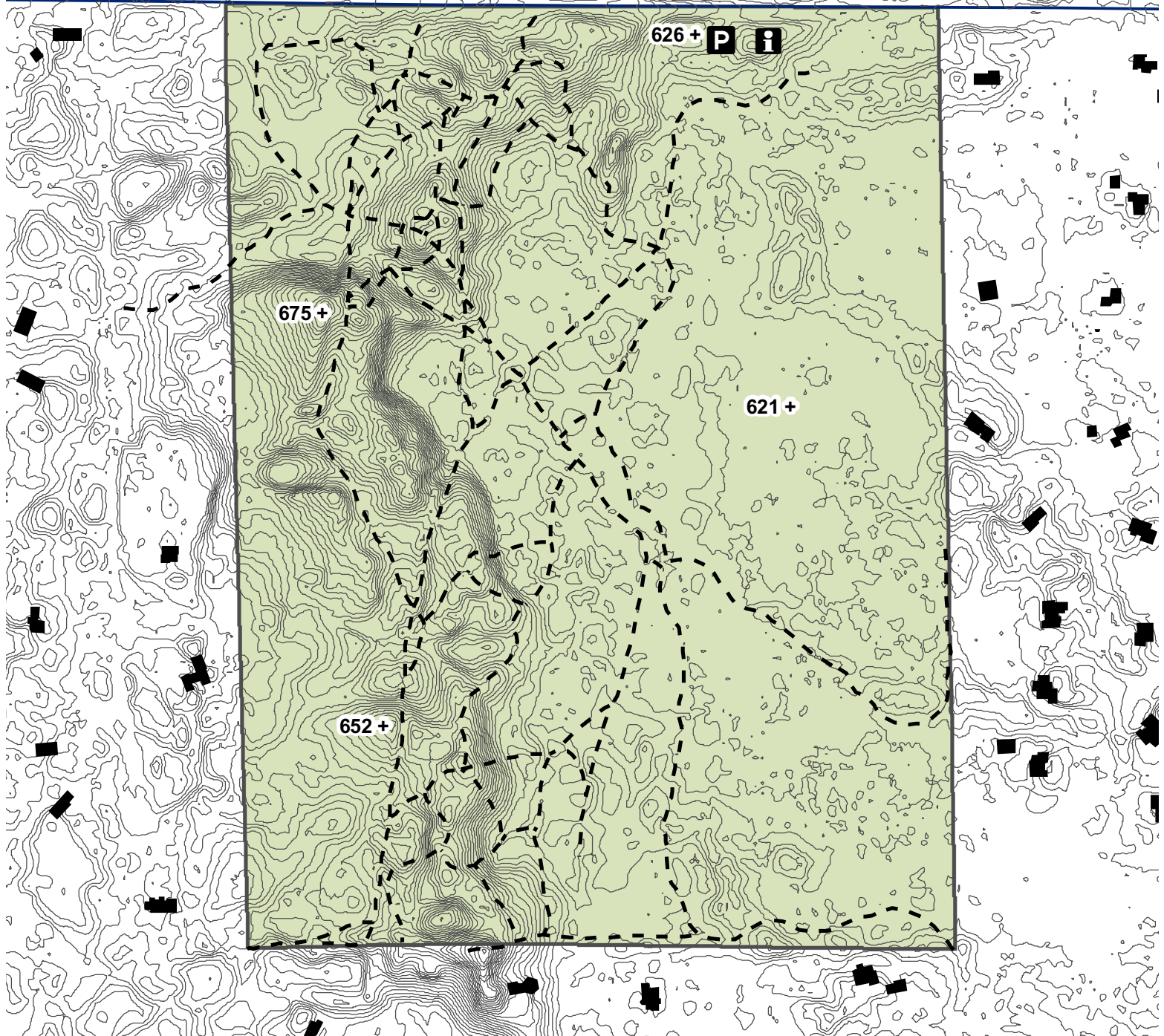
Van Buren Dunes

Port Sheldon Township

TO LAKESHORE DR.

VAN BUREN ST.

TO 168TH AVE.



Ottawa County Parks & Recreation Commission

Van Buren Street Dunes

16780 VanBuren Street
West Olive, MI 49460

This Open Space Land is 120 acres of inland dunes with recently-thinned red pine plantations and scattered pockets of deciduous forest. There are no designated trails or restroom facilities.

Facilities and Activities

- Small parking area and information kiosk
- Off-trail hiking and cross-country skiing
- Dogs are allowed on or off leash

Hunting

Firearm and archery hunting are permitted at Van Buren Street Dunes.

Park Hours

Van Buren Street Dunes is open year-round, however, the parking area is not plowed in winter. Open Space lands are open from 5 a.m. to 10 p.m.

Fees

There are no park fees.

Rules and Regulations

The following activities are prohibited at Van Buren Street Dunes:

- Trapping
- Fires
- Camping
- Bicycles
- All motorized vehicles
- Horses

Directions

Van Buren Street Dunes is located in Port Sheldon Township. The parking area is on Van Buren Street between Lakeshore and 164th Avenues.

For emergencies, call 911.



Ottawa County Parks & Recreation Commission

12220 Fillmore Street, West Olive, MI 49460

Phone: (616) 738-4810

Email: parks&rec@miottawa.org

Website: <http://www.miottawa.org/parks>