

Bend Area (updated 01.17.11)

The Ottawa County Board of Commissioners took action at its December 14, 2010 meeting to approve a purchase agreement with Huizenga Development Land, L.L.C to acquire 70 acres with approximately 0.7 miles of Grand River frontage in Georgetown Township. The purchase expands the Ottawa County's Bend Area park site from its current size of 188 acres to 258 acres and expands its Grand River frontage to 1.3 miles. The purchase price for the property is \$336,000 with funding from the parks and recreation millage. The property had been targeted for acquisition for several years.

Ottawa County Parks first targeted land in the Bend Area for acquisition in 2000 following the completion of a master plan for the property which includes both natural land along the Grand River and gravel pit properties currently being mined. The goal is to transform the area into a 500 acre county park following the completion of mining activities in future years. Ottawa County purchased its first property in the area, 188 acres from the Boyntons, in 2008. Future park facilities at the park will include swimming, picnicking, hiking and related recreation activities. In the short-term, following installation of boundary signs and other improvements., the newly acquired property will be developed with hiking trails and also be available for fishing and archery deer hunting.





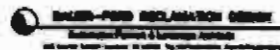
Extracting Resources For Today
 Shaping Landscapes for Tomorrow

BEND AREA MASTER PLAN

Georgetown Township, Michigan

JITAWA COUNTY PARKS AND RECREATION COMMISSION

Ottawa County, Michigan

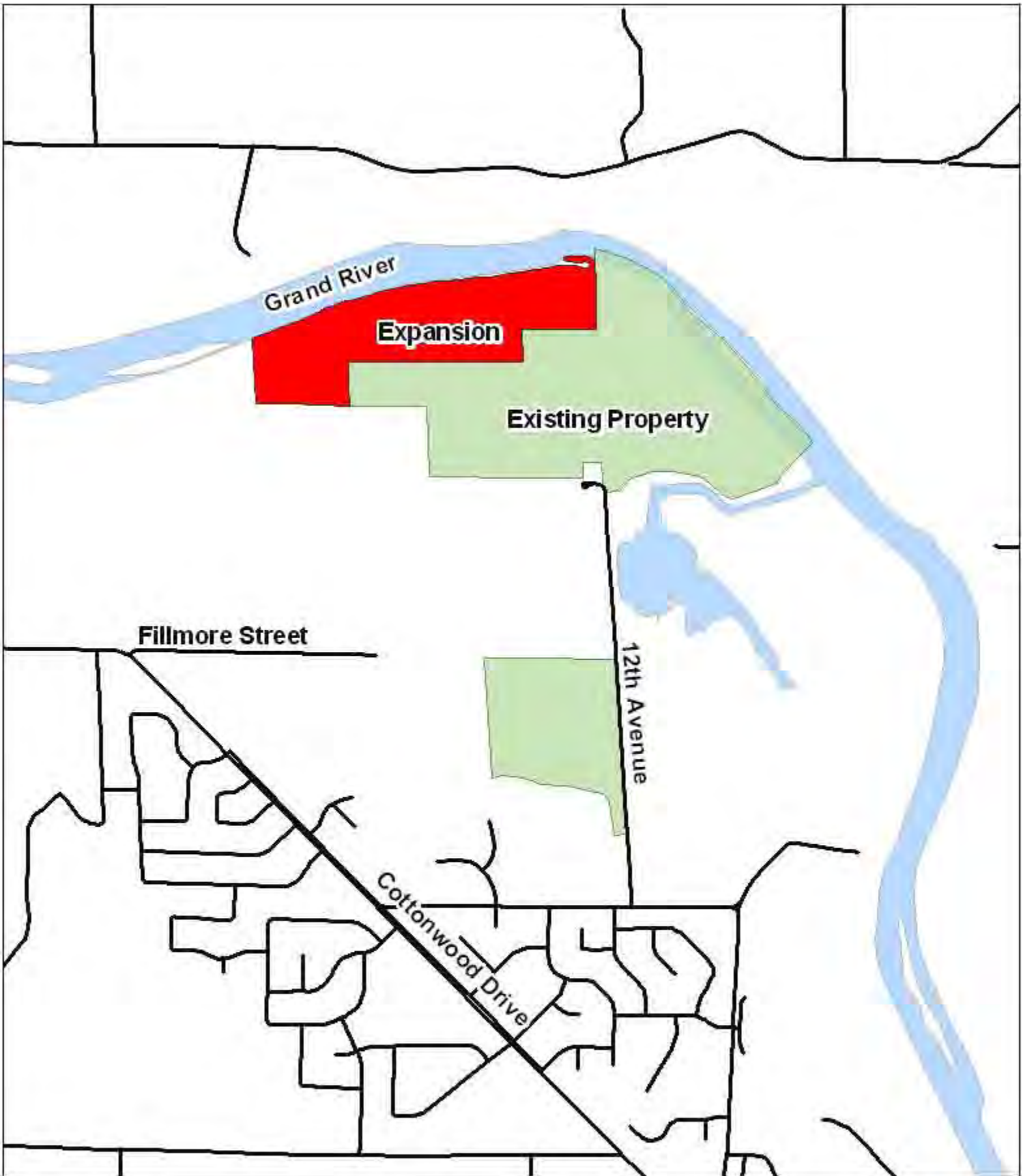


Section

Center Section



East Section



Bend Area Expansion

